

Topic	Page
What's New.....	1
NJPPS Meeting .....	1
February Program.....	2
Monthly Meetings.....	3
Mark Your Calendar .....	3
By Law Changes .....	4-5
Members' News .....	6
President's Message.....	6
Opp-art-unities.....	7
Shows to See.....	7
Shows to See (cont.).....	8
Shows to See (cont.).....	9
Workshops.....	9
WAA Officers.....	10

## What's New.....

- New schedule for 2015 meetings are the **SECOND** Wednesday of the month starting at 5:30 pm for meeting and 6 pm for presentation.
- Members may need to unblock the email address [info@willingboroart.org](mailto:info@willingboroart.org) – check your spam file for that email address and make sure to “accept” or “approve” that address.
- Recommended changes to the by-laws will be voted on at the February 11 meeting, please see the proposed changes on page 4 and 5.

### New Jersey Pastel Painters Society (NJPPS) Meeting

**Wednesday, February 4 at 1:00  
at the JFK Center**

*For more information contact Myra Ryan  
at [rmmlryan@gmail.com](mailto:rmmlryan@gmail.com) or call (609) 784-3171.*



**February presenter**

**Dot Bunn**

***Landscaping with Color Management***

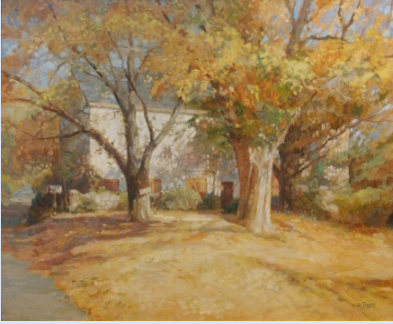
The oldest art organization in Burlington County  
 Founded 1964 – Incorporated 1965  
 501(c)(3) Non-Profit Organization  
 Facebook: [Willingboro Art Alliance](https://www.facebook.com/WillingboroArtAlliance)  
 Website: [www.willingboroart.org](http://www.willingboroart.org)  
 Email: [info@willingboroart.org](mailto:info@willingboroart.org)

## February Program

# Dot Bunn

Studio Oil Painter

Elected member of Allied Artists of America



*For Sale*



*Descent to the River*



*Standing in Autumn*



*Deep Winter*

At this presentation Dot will talk about and demonstrate her system of color control that she teaches and uses in her work.

Dot is a full time studio oil painter with a strong commitment to working with and teaching traditional methods of painting. Dot states that “Good paintings are the result of intelligent planning and the endless study of technique and process. My paintings are thoughtfully developed with preliminary drawings using traditional methods of composition built on the geometry of rectangles much the same as was done by painters dating back to the Renaissance. I enjoy the challenge of building a composition that works two dimensionally while depicting reality”.

Dot’s work has been exhibited in solo and juried exhibitions, receiving many awards, including the Alden Bryan Memorial Medal for Traditional Landscape from Allied Artists of America; an Honorable Mention and Semi-finalist award from Art Renewal Center Salon Show; two Patron Awards for Painting from the Phillips' Mill Annual Juried Art Exhibition. Her work has been included in the Butler Institute of American Art National Midyear Exhibition, American Artists Professional League Grand National Exhibition and Art Association of Harrisburg Invitational Exhibition.

Her involvement in the art community includes teaching weekly painting classes from her Red Stone Farm Studio; supporting other artists by hosting workshops by nationally known artists; plus lecturing and PowerPoint presentations.

[www.dotbunn.com](http://www.dotbunn.com)

---

## Mark Your Calendar

Wednesday, February 4  
NJPPS Monthly  
Members Meeting  
1 to 4 pm

Wednesday, February 11  
WAA Monthly  
Board Meeting  
4 to 5 pm

Wednesday, February 11  
WAA Monthly  
Members Meeting  
5:30 to 7:30 pm

Friday, February 6  
*Mysterious*  
Markeim Art Center  
Reception 6:30 to 8:30 pm

Sunday, February 8  
*Photography and Digital Print*  
Medford Art Center  
Reception 2 to 4 pm

Sunday, February 8  
*Studio Di Pilla*  
Church St. Art & Craft  
Reception 2 to 4 pm

Saturday, February 14  
*NJPPS Exhibit-*  
*About the Art Gallery*  
Reception 1 to 5 pm

Sunday, February 15  
*Palmyra Cove*  
Reception 1 to 3 pm

Monday, March 2  
*African- American & Women's*  
*History Exhibit*  
Center for the Arts  
Reception 7 to 9 pm

## February 11 Members' Meeting

Room 300 at the JFK Recreation Center  
Levitt Parkway & 429 JF Kennedy Way, Willingboro

Wednesday, February 11, 5:30 PM  
Presenter: Dot Bunn



**EXECUTIVE BOARD MEETING WILL BE  
WEDNESDAY, FEBRUARY 11 - 4 TO 5 PM  
ROOM 300 AT THE KENNEDY CENTER**

**ALL WORKSHOPS WILL BE HELD  
IN ROOM 300 OR 301 WORKSHOPS**  
(all levels welcome)

### **9AM, Wednesdays, Room 301, Kennedy Center**

February 4	Drawing, portraits continued
February 11	Drawing portraits in pencil or charcoal using the methods we have learned
February 18	Open Workshop
February 25	Critique

Most Wednesday workshop sessions are planned with a specific medium or technique to explore, but you are welcome to just come and paint. Materials and paints are supplied in many of the classes. A \$1.00 donation is requested from all participants in the workshop to help in purchasing art supplies. To check out one of the many books or videos from our library, see our librarians, Bill Devine or Rene Yohannan.

### **New Jersey Pastel Painters Society (NJPPS)** **is the first Wednesday of the month from 1 to 4 pm.**

For more information contact Myra Ryan  
at [rmmlryan@gmail.com](mailto:rmmlryan@gmail.com) or call (609) 784-3171.

### **Life Classes are \$68 for eight sessions**

Life Classes are held each Monday from 10 am to 1 pm  
contact Marcia Steinbock for information at [marcia@ucountonus.com](mailto:marcia@ucountonus.com).

### **Costume Classes (WAA COS) \$68 for eight sessions**

WAA COS is a group of artists who meet weekly working with their choice of mediums and styles. Meet on Thursdays at 10 am until 1 pm. Each week there is a costumed model to work from. For more information contact Denise McDaniel at [dmmmmcwaa@gmail.com](mailto:dmmmmcwaa@gmail.com).

### **Tuesday and Thursday: Open Studio from 9 am to 3 pm**

Contact Arleen Potter ([arleen169@aol.com](mailto:arleen169@aol.com)) for Tuesday information  
Myra Ryan ([rmmlryan@gmail.com](mailto:rmmlryan@gmail.com)) for Thursday information

A big 'THANK YOU' to our grant facilitators: Margarete Naperski, our instructor and assistants, Isabel Sherman, Jo-Ann DelVacchio, Mimi Scalia. The grant funding allowed students to create wonderful, creative items out of different clay mediums.



## By-law Changes

*Recommended changes to the by-laws will be voted on at the February 11 meeting*

### Modify

#### Article IV. Officers and Their Election

Section 1. The officers of the WAA shall be President, First Vice President, Second Vice President, Recording Secretary, and Treasurer. These officers shall be elected annually in November, to assume office at the January meeting. No officer shall be elected to the same office for more than two (2) consecutive terms except when there is a 2/3 vote by the general membership favoring another term.

### To

#### Article IV. Officers and Their Election

Section 1. The officers of the WAA shall be President, First Vice President, Recording Secretary, and Treasurer. These officers shall be elected annually in November, to assume office at the January meeting. No officer shall be elected to the same office for more than two (2) consecutive terms except when there is a 2/3 vote by the members voting favoring another term.

---

### Delete

#### Article V – Section 3

##### The Second Vice President shall

1. Perform all duties as assigned by the President
  2. Organize and Chair WAA Scholarship team
  3. Work with outside organizations to alert schools to the availability of the scholarship
  4. Send out notices to the schools
  5. Select judges for the Teen Arts Show'
  6. Receive notices from the winner regarding acceptance into an appropriate higher education facility
  7. Verify eligibility of award winner and expedite payment for award winner.
  8. Submit budget to board for approval
  9. Scholarship Coordinator shall
    - A. Assist in planning Teen Art Exhibition and show
    - B. Send out notices and work with schools to notify students of scholarship
    - C. Arrange for judges
    - D. Verify eligibility of recipient and initiate payment of award
-

**WAA Members' Shows  
Scheduled for 2015**

Lyceum (Vanitas),  
Burlington City  
March 1 to May 1

Smithville Annex Gallery  
April 16 to May 17

Pemberton Library  
May 1 to June 29

Burlington County Library  
June 1 to June 29

Willingboro Library  
September 1 to  
September 29

Annual Juried Show at  
Dr. David Flinker Gallery  
October 4 to October 30

*If interested in showing, please  
contact Joy Hoffman  
(joyke41@comcast.net*

*JFK Hallway Shows to be  
announced after  
construction is completed*

**Started in 2015 the  
Members' Meetings  
on the **second**  
Wednesday of the  
month start at  
**5:30 pm.****

**Presentation  
starts at 6 pm  
No meetings in July,  
August or December**

**By-law Changes (continued)**

Add

**Under Article VIII Part B**

**Section 11. Scholarship Coordinator**

1. Organize and Chair WAA Scholarship team
2. Work with outside organizations to alert schools to the availability of the scholarship
3. Send out notices to the schools
4. Select judges for the Teen Arts Show'
5. Receive notices from the winner regarding acceptance into an appropriate higher education facility
6. Verify eligibility of award winner and expedite payment for award winner.

Currently the position of Teen Arts Coordinator is vacant and we need **a volunteer** to work with personnel from Smithville Mansion Gallery to support the Teen Arts Scholarship Program.

The duties are described above – if interested, please contact RJ Haas at [rjhaas.com](http://rjhaas.com) or call and leave a message 609 859-0607.

**KYNICE D-SIGN**

VISUAL SOLUTIONS

Video Production

856 631-8411      [WWW.KYNICEDESIGNS.COM](http://WWW.KYNICEDESIGNS.COM)

The advertisement features a collage of images including a close-up of a hand holding a pen, a person working at a computer, and a group of people in a meeting. A video player interface is visible with the text 'Become a WAA member'.

## President's Message

We are attempting to make sure our senior members are able to come to the meetings. We have adjusted meeting schedules and demonstration start times. If this works and we get positive feedback from the general membership, then this may become permanent. I know it is not the best thing to attract younger members but it was a good compromise by the board. A car pool is also available by contacting me by phone and I will make arrangements, if possible.

I am looking forward to Dot Bunn's presentation in February and John Ennis' workshop in March, so please look for those times in the Sketchbook or the flyers that are sent. At our regular meeting in March, we will have our own Denise McDaniel giving a talk on abstract art.

As a rule, any member is invited to the Board meetings at 4 pm, which are held prior to our general members' meeting.

Best wishes,

*RJ Haas,*  
WAA President

## Member News

- The following WAA members were accepted into the Philadelphia Sketch Club Annual Domenic DiStefano Memorial Works on Paper Show in January: **Joyce McAfee, Doris Peltzman, Deborah Pey** and **Della Sumner**. Deborah Pey received an Honorable Mention.
- **Joy Hoffman** participated in the Medford Art Center Members Invitational Show with 3 collages. She also submitted a collage to the Burlington County Art Guild's Members Exhibit at the Pemberton Library. Joy has three works on display as part of the Winters Members Exhibit for the Burlington County Art Guild at the Pemberton Library until February 21, 2015.
- **RJ Haas** has artwork in the show Dreams and Meditations at the Mata Polska restaurant in Trenton until March 4.
- **Susan Barnes** has five monoprints in the Annual Small Works Show at Frame Works Studio & Gallery, 2103 Walnut St., Philadelphia. The show runs through February 20, 2015. The gallery opened daily except Sundays with all show works priced \$250 or less.
- **Marty Goldstein** has exhibition of his paintings on display at the Mount Laurel Library, 100 Walt Whitman Ave, Mount Laurel, NJ 08054. The exhibit runs through Friday, February 27, 2015.
- **Richard Montemurro** had three digital photographs in "Winter on My Mind" at the Medford Community Center and has one digital photograph in the Burlington County Art Guild Members Exhibit. Richard also had three photographs in the Medford Art Center's Annual Members All Media Invitational Show and Sale where he received an "Award of Excellence". Richard has two pieces in the Camden County Cultural and Heritage's Annual Juried Exhibit through March 2.
- **Linda Hollinger** had her photograph "Roxanne" published in Black & White Magazine February issue 107, 2015 and also had her photograph "Girl with Doll, Itaparica Brazil" accepted into Photography 34 Perkins Center for the Arts juried show.
- **Norman Gaffin** has two works in the NJ Pastel Painters' Society Exhibit held at About the Art Gallery Space in Mount Holly.
- **Doris Peltzman** will be one of the featured artists at Artists' House Gallery: Women Artists of Philadelphia, opening February 2015. This will be open during First Friday, February 6 and for an afternoon reception on Sunday February 8, 2015. Doris will also have two oils on plexi-glass at the Main Line Art Center's Professional Artists Members Exhibition, on display until February 11, 2015.
- **Nancy Sullivan** has a solo art exhibit at the Palmyra Cove in February 2015. The reception will be held on February 15 from 1 to 3 m.



**The Willingboro Art Alliance is offering a Portrait Painting Workshop at the JFK Center with John Ennis on March 21 from 10 to 3**


John Ennis is a nationally recognized portrait artist. His work is included in the collections of major institutions throughout the United States including M.I.T., Boston Latin School, Foundation for the Carolinas, Temple University and many more. John has received 17 national and international awards, 12 of these from the Portrait Society of America.

In his words, "There are few art forms that lend themselves more to the expression of the human experience than painting a portrait. I use what time I have with a portrait subject to explore their life, their personality, and the perception of the people that know and love them. When I step up to the canvas, I am searching for something about them, their character, their love of life, their place in our world, but ultimately I am expressing my perception of them. It's a shared experience and great fun. Left behind is a short but often intense bonding with an individual, family or group of people, and a legacy that outlives us all."



If interested, contact Donna Fascenda to register [dfascenda@comcast.net](mailto:dfascenda@comcast.net). Cost is \$20 for members, \$50 for non members

## Opp-art-unities

- **Willingboro Art Alliance and Lyceum Hall** presents the **2015 Vanitas Show**, open to WAA members. Artists may submit one original two-dimensional piece of work, fine art or photography in the form of a Vanitas. Submit completed form and fee to Joy Hoffman by Saturday, February 7, 2015; and work is to be delivered Sat, February 14 from 10 to 12 pm. Prospectus is available on the WAA website: [www.willingboroart.org](http://www.willingboroart.org)

- **About The Art:** new gallery space in Mount. Holly, curated by Jan Terry, will be inviting artists to show their work in 60 to 90 day intervals. The Gallery Space is located within the office condominiums at 137 High Street. Please contact Jan Terry for further information about exhibit opportunities at 609 280-6890.
- **Gold Light Gallery** in New Hope, PA, open call to all impressionist, realist, and representational artists for **1<sup>st</sup> Annual Open Juried Art Show** - March 7 – March 19. On-line submission of 2 pieces is due February 15 at <http://www.goldlightgallery.com/juried-show.html>.
- **Artists of Yardley 4<sup>th</sup> Annual Juried Show April 3 – April 26, 2015.** Up to 3 pieces may be submitted digitally at [www.artistsofyardley.org](http://www.artistsofyardley.org). Deadline for entries is February 20, 2015.
- **Medford Arts Center:** Attention Photographers and Digital Artists. Call for entries: **2015 Juried Photography and Digital Print Show.** February 6 through March 15, 2015. Prospectus available at [medfordartscenter.org](http://medfordartscenter.org).
- **Philadelphia Sketch Club** call for entry: **2015 PSC Art of the Flower (AOF) – March 6 – 28, 2015.** Digital entry deadline: Sunday, February 15, 2015 at midnight. Prospectus: **AOF Prospectus 2015\_4** is available at [www.sketchclub.org](http://www.sketchclub.org).
- **Art Within Reach - Spring 2015 at The Factory** located at The Factory in Collingswood, NJ. Deadline for submissions is February 20, 2015. <http://www.artwithinreachnj.com/#!call-for-artists/cv1s>

## Shows to See

- **The Gallery at Lower Bucks Campus of BCCC** in Bristol PA is seeking work for their upcoming "**Show Some HeART 125**" February 2 to March 12, 2015. This is not a juried show, but all work will be evaluated for both content and quality. All work is to be priced at \$125. Pre-registration is required at [Christine.Tompkins@bucks.edu](mailto:Christine.Tompkins@bucks.edu) email subject line: Show Some HeART 125.
- **Perkins Center for the Arts**, Moorestown. **Photography 34** will be on display until March 28, 2015.

*Get well wishes  
go out to*

*Bill Devine  
Leroy Spears  
Margaret Mary Vail  
Nona Dolan*

---

## JFK Hallway Shows on Hold

Due to the renovation project at the JFK building the WAA will not be able to hang our usual hallway exhibit until construction is completed.

This renovation of JFK is due to last until March 2015 or later.

We will notify all of the members when the hallway exhibit is ready to be hung again.

Thank you all for supporting us in this highly visible art exhibit.

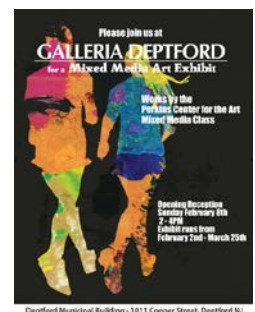
Joanne Sherman,  
Hallway Chair



'LIKE' us on  
Facebook at  
Willingboro  
Art Alliance

## Shows to See (continued)

- **Markeim Art Center**, Haddonfield presents **MYSTERIOUS – Photography Show** during the entire month of February. The opening reception will be held on Friday, February 6 from 6:30 to 8:30 pm. For more information, [www.markeimartcenter.org](http://www.markeimartcenter.org)
- **Medford Arts Center Juried Photography and Digital Print Show** will be on display from February 6 to March 15, 2015. Reception and Presentation of Awards is on Sunday, February 8 from 2 to 4 pm. In the Gazebo Room – Carolyn Peterson, a one woman exhibit. Meet the artist on Sunday, February 8 from 2 to 4 pm.
- **West Windsor Arts Center** 952 Alexander Road, Princeton Junction, NJ 08550 **MEMBER SHOW: INSPIRATION POINT** - Art Inspired by the other Forms of Art. January 5, 2015 to February 25, 2015 [WestWindsorArts.Org](http://WestWindsorArts.Org).
- **Hugh's New Views Art Exhibit** at the Warden's House Gallery, 150 High Street, Mount Holly, NJ. An art exhibition featuring paintings by local artists of select locations as they look today compared to paintings by Hugh H. Campbell from the mid-20th Century. For information call (609) 265-5858.
- **Ellarslie Mansion in Cadwalader Park, Trenton, NJ** will be showing two new exhibits until March 8. **Sweethearts: Creative Couples** and **Black and White ...with a touch**. An artists' talk will be on February 15 at 2 pm. For information contact [www.ellarslie.org](http://www.ellarslie.org)
- **About the Art Gallery Space** at the Burlington County Bar Association offices: 137 High Street, Mount Holly. **NJ Pastel Painters Society Exhibition** on view January and February 2015. Second Saturday Reception will be February 14, 1 to 5 pm.
- **ABSTRACT Expressions Contemporary Art Gallery** is located at 70 High Street in Mount Holly, New Jersey. Gallery hours are Friday from 1 to 7 pm and Saturday from noon until 7 pm, and by appointment. Contact the Gallery at 609-267-7513, by email at [ABSTRACTExpressionsGallery@comcast.net](mailto:ABSTRACTExpressionsGallery@comcast.net).
- **Burlington County College Student Art Gallery** at 1 High Street, Mt. Holly presents the **Best of 2014 Student Showcase**. The exhibit will be on display until February 14, 2015.
- **Galleria Deptford** for a **Mixed Media Art Exhibit** runs from February 2 to March 25. The works are by the Perkins Center for the art mixed media class. Opening reception is Sunday, February 8 from 2 to 4 pm. Deptford Municipal Building at 1011 Cooper Street, Deptford.
- **Center for the Arts** in Marlton, NJ is exhibiting the **Burlington County High School Student Exhibit** through February 6, 2015.
- **Church St. Art & Craft** (formerly Home Fine Art Gallery) located at 2 Church St. Mount Holly, NJ. **Studio Di Pilla, paintings and drawings by the students of Gwynn Walker Di Pilla** are on display from February 4 to March 1, 2015. The opening reception will be held on Sunday, February 8 from 2 to 4 pm.





## Willingboro Kennedy Building Closures for 2015

**Monday, February 16**  
*President's Day*

**Friday-Sunday**  
**April 3 to April 5**  
*Easter Holiday*

**Monday, May 25**  
*Memorial Day*

**Thursday, July 4**  
*Independence Day*

**Monday, September 7**  
*Labor Day*

**Monday, October 12**  
*Columbus Day*

**Wednesday, November 11**  
*Veteran's day*

**Thursday-Friday,**  
**November 26 to 27**  
*Thanksgiving*

**Friday, December 25**  
*Christmas*

*Inclement weather information to see if the building is closed, please call 609 877-2200 extension 1116 and a live person will answer.*

---

Please email or call our editor with art news for the March Sketchbook by February 18 to [jessica\\_kane@outlook.com](mailto:jessica_kane@outlook.com) or call (609) 859-0607 and leave a voice message

## Shows to See (continued)

- The **Noyes Museum** of Stockton College current exhibition: **MICA: THEN/NOW** until May 17, 2015. This exhibition showcases artwork of alumni from one of the nation's oldest and top rated art schools, Maryland Institute College of Art (MICA). The works on exhibit have been created over the past 150 years. Viewers will experience how an individual's unique vision has developed with examples of work created early in the artists' careers, as well as by their current images or objects.
- The **Mount Laurel Library** has Marty Goldstein paintings on display until February 27, 2015. 100 Walt Whitman Avenue, Mount Laurel, NJ 08054.
- **Center for the Arts** in Marlton, NJ is exhibiting **African - American & Women's History Exhibition** runs February 16 to March 23, 2015. This year's Women's History exhibit will feature Kathleen Frame and her version of "Loving Rita; The Kiss". Kathleen is a Cancer survivor and this show is dedicated to all of the strong loving women in her family who taught her how to be brave. Reception will be held on Monday, March 2 from 7 to 9 pm.
- Elliot & Elliot Financial and Mata Polask present **Dreams and Meditations** through March 9, 2015. Located at the **Mata Polska** restaurant in Trenton.

## Workshops

- The **WAA Costume/Portrait Winter Session** is beginning on **Thursdays, 10 to 1 pm**. At these sessions we will be working from Japanese costume, a Belly Dancer, Islamic costume and more. For details contact Denise at [dmmmmcwaa@gmail.net](mailto:dmmmmcwaa@gmail.net) or visit the WAA website.



- The **South Jersey Camera Club** meets the third Tuesday of every month. [www.sjcameraclub.org](http://www.sjcameraclub.org).
- **Church St. Art & Craft** (formerly Home Fine Art Gallery) offers six workshops led by one of their member artists, Maureen Gass-Brown. These workshops are designed to address specific painting areas. \$25 per class/\$20 per class if registered for all 6! For more information: <http://www.churchstartandcraft.com/#!/watercolor-workshops/-c7qo>.

**WAA OFFICERS - 2015**

President	RJ Haas
First Vice President & Exhibition Chair	Joy Hoffman
Second Vice President	Open
Recording Secretary	Virginia Ibarra
Treasurer	Patricia Watson
Past President	Donna Fascenda
Member at Large	Myra Ryan Arnold Barnett Ellen Barnett

**WAA CHAIRPERSONS**

Membership	Margaret Mary Vail
Programming	RJ Haas
Art Education	Ben Cohen
Public Relations/Publicity	Carolyn Burke

**WAA COORDINATORS**

Monday Life Class	Marcia Steinbock
Monday Clay Class	Jo-Ann DeIVacchio
Tuesday Open Studio	Arleen Potter
Wednesday Workshop	Ben Cohen Fran Morrison Athanasia Ward
Wednesday NJPPS	Myra Ryan
Thursday Open Studio	Myra Ryan
Thursday Costume	Denise McDaniel
JFK Hallway Shows	Joanne Sherman
Sketchbook Editor	Jessica Kane
Sketchbook Pickup	William Ruspantine
Order Art Supplies for Wed. class Including Coffee/Recruits	
Hospitality	Patricia Watson
Sunshine	Athanasia Ward
Library	Bill Devine Rene Yohannan
Historian	Athanasia Ward

If you have news, call Donna Fascenda at (609) 859-0607 or email Jessica Kane at [jessica\\_kane@outlook.com](mailto:jessica_kane@outlook.com).

**First Class Mail**

**The Willingboro Art Alliance  
PO Box 2276  
Willingboro, NJ 08046**